

# CSP Non-Production Integration

## Testing with Mock EINs


Developer Guide

Last Updated 12/11/2025

## Summary

When integrating an application with TCR, it's important to test brand and campaign registration flows that result in both positive and negative outcomes. To help developers test some of these scenarios, TCR has designated a number of mock EINs which can be used with non-production brand registration and can control the outcome of the following properties:


- Brand identity status (VERIFIED or UNVERIFIED)
- Brand optional attributes (e.g., taxExemptStatus, russell3000)
- Brand feedback category (e.g., TAX\_ID)
- Auth+ vetting status (e.g., ACTIVE, FAILED)
- RCS vetting status (e.g., ACTIVE, FAILED)
- Brand asset status (e.g., VERIFIED or UNVERIFIED)

 **Note:** Mock EINs can only be used in non-production environments such as Staging, Preview or QA **when registering new brands**. Also, some mock EIN configurations may exist outside of what is described in this document for internal testing purposes.

---

### Document Changes:

- Changed RBM references to RCS to align with Google's new branding for the service.

 **Note:** While changes from the previous version of this document are usually highlighted in yellow, the updated references from RBM to RCS are not highlighted in this version in order to maintain readability.

---

# Table of Contents

<b>Summary</b> .....	<b>1</b>
<b>Introduction</b> .....	<b>4</b>
Entity Types.....	4
Identity Statuses.....	4
RCS Vets.....	4
Brand Asset Verification.....	5
Auth+ 2.0 Vets.....	5
Example: NON_PROFIT Entity Types.....	5
<b>Supported Mock EINs</b> .....	<b>8</b>
All Entity Types.....	8
NON_PROFIT Entity Type.....	11
PRIVATE_PROFIT Entity Type.....	11
PUBLIC_PROFIT Entity Type.....	12
GOVERNMENT Entity Type.....	13
<b>FAQ</b> .....	<b>14</b>

# Document History

Date	Comment	Author
7/11/2024	Updated content to match 5.13.0 release.	Victor Cardoso
7/23/2024	Added additional EIN rules.	Victor Cardoso
10/17/2024	Added mock EINs for Public Profit entity types to support Authentication+.	Victor Cardoso
7/24/2025	Added mock EINs for RBM vets and updated language to reflect new entity type display names.	Victor Cardoso
8/7/2025	Added mock EINs for Auth+ 2.0 vets. This information was taken from the Auth+ 2.0 Testing document, which is no longer necessary as the feature has been released.	Victor Cardoso
8/7/2025	Added additional mock EINs for RBM vets and preserved previous version's highlighting.	Victor Cardoso
8/21/2025	Added mock EINs for brand asset testing.	Victor Cardoso
9/18/2025	Added a FAQ section to answer commonly submitted questions.	Victor Cardoso
12/11/2025	Changed RBM references to RCS to align with Google's new branding for the service.	Victor Cardoso

# Introduction

## Entity Types

When registering a brand, the following entity types require an Employer Identification Number (EIN):

- PRIVATE\_PROFIT
- NON\_PROFIT
- PUBLIC\_PROFIT
- GOVERNMENT

Specific entity types will grant access to special campaign use cases like Charity, Emergency, Political, and more. By using TCR's mock EINs with these entity types, a developer can test their applications with different brand characteristics.

## Identity Statuses

The identity status of a brand will determine if it is able to create campaigns. TCR's mock EINs return values that fall into two groups: VERIFIED and UNVERIFIED.

- **VERIFIED:** The brand's identity status was confirmed. This means it has access to standard campaign use cases.
- **UNVERIFIED:** The brand's identity status could not be confirmed. The brand cannot create any campaigns until it has taken action to confirm its identity status.

## RCS Vets

An RCS vet is classified as an external vet, meaning that it adds an RCS vetting record to a brand. These vetting records have a vetting status that uses the labels PENDING, ACTIVE, FAILED, and EXPIRED. The EINs shown for RCS vets (noted in the [All Entity Types](#) section) modify the vetting status. All brand entity types except SOLE\_PROPRIETOR can request RCS vets, although the feature requires activation by TCR's customer support. For more information, see the [RCS Vetting Feature Overview](#).

## Brand Asset Verification

The Brand Assets feature allows CSPs to upload assets such as banner images and logos for a brand. They can then submit them for verification to use in RCS campaigns. This type of verification returns a status for brand assets that include PENDING, VERIFIED, UNVERIFIED, and EXPIRED. The EINs shown for brand assets (noted in the [All Entity Types](#) section) determine the status of assets submitted for verification. All entity types except SOLE\_PROPRIETOR can use brand assets, although the feature requires the RCS feature flag on an account to be activated by TCR's customer support. For more information, see the [Brand Assets Feature Overview](#).

## Auth+ 2.0 Vets

An Auth+ 2.0 vet allows a PUBLIC\_PROFIT brand to create new campaigns. Similar to RCS vets, this type of vet is classified as an external vet, meaning that it adds an Auth+ vetting record to a brand. Vetting records for the brand will have a vetting status that uses the labels PENDING, ACTIVE, FAILED, and EXPIRED. The Auth+ 2.0 EINs in this document modify the vetting status. All brand entity types except SOLE\_PROPRIETOR can request Auth+ 2.0 vets. For more information, see the [Authentication+ 2.0 Feature Overview](#).

## Example: NON\_PROFIT Entity Types

Some MNOs have special rules around the treatment of NON\_PROFIT brands:

- NON\_PROFIT brands with a 501(c)(3) tax exempt status qualify for special messaging rates. Also, only 501(c)(3) organizations qualify for the Charity use case.
- NON\_PROFIT brands with a 501(c)(3), 501(c)(4), 501(c)(5), and 501(c)(6) tax exempt status qualify for the Political use case.
- NON\_PROFIT brands with a section 527 tax exempt status and an imported Campaign Verify (CV) token only qualify for the Political use case. Brands with a 527 tax exempt status cannot access standard use cases.

## 501(c) Scenarios

To support testing of 501(c) scenarios, TCR has designated a number of mock EINs for NON\_PROFIT entity types. For example:

- Creating a NON\_PROFIT brand with an EIN of 000000001 will result in a VERIFIED identity status and a tax exempt status of 501(c)(3).
- Creating a NON\_PROFIT brand with an EIN of 000000002 will result in a VERIFIED identity status and a tax exempt status of 501(c)(4).

For a full list of mock EINs and the statuses and attributes they return, see the [Supported Mock EINs](#) section of this document.


## 527 Scenarios

Section 527s are NON\_PROFIT political organizations. While entities with a section 527 and 501(c) tax exempt status are both non-profit, they are mutually exclusive from one another. In TCR, a section 527 tax exempt status can only be achieved by completing a political vet by Campaign Verify (CV). To emulate a 527 scenario using mock EINs, perform the following steps:

1. Register a NON\_PROFIT brand with the mock EIN 000000100.
2. Import a CV token. To create a mock CV token, see the section below.


## Creating a Mock Campaign Verify Token

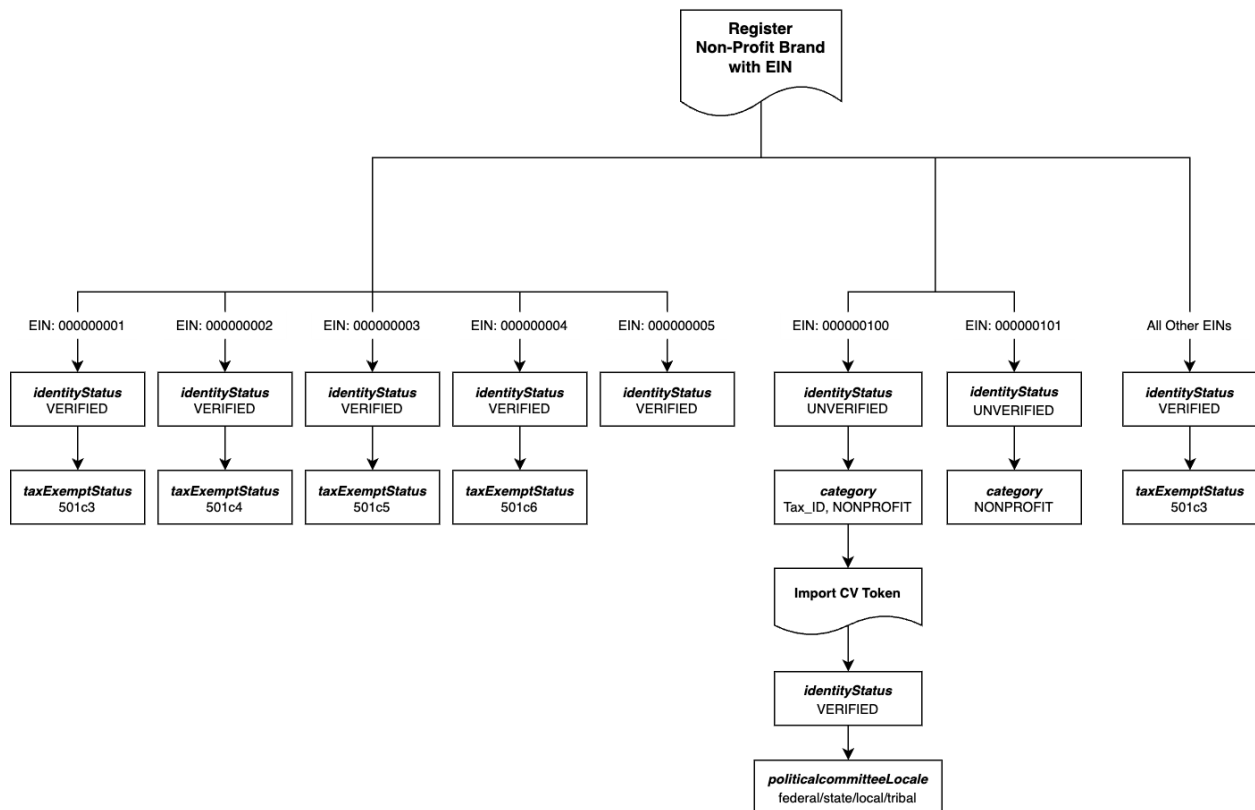
CSP API users can create a mock CV token by using the **POST** `/brand/{brandId}/externalVetting/mockCvToken` endpoint.

 **Note:** Mock CV tokens can only be used in non-production environments such as QA, Preview or Staging.

## NON\_PROFIT Mock EIN Diagram

The following diagram shows the different identity statuses and other attributes that result from using TCR's mock EINs for NON\_PROFIT entity types:

 **Note:** Pay special attention to the All Other EINs flow. When using the NON\_PROFIT entity type, entering an EIN other than the ones listed below will result in an *identityStatus* of VERIFIED and a 501c3 *taxExemptStatus*.



# Supported Mock EINs

The following tables list the different mock EINs supported by TCR, organized by entity type. Multiple brands can use the same mock EIN, although these are only supported for new registrations (i.e., you cannot update an existing brand with a mock EIN). This lets developers test different scenarios without having to continuously delete and create brands for a particular EIN flow.

## All Entity Types

### RCS Campaigns

All entity types except SOLE\_PROPRIETOR can use the following EINs to return specific RCS campaign verification results.

#### Notes

- CSPs must submit a ticket to [support@campaignregistry.com](mailto:support@campaignregistry.com) to enable RCS functionality on their account before they can begin testing.

EIN	Verification Status	Description
000000000	ACTIVE	Will return a successful RCS campaign verification with an ACTIVE verification status when submitted. Identity status changes to VETTED_VERIFIED.
000000100	FAILED	Returns an unsuccessful RCS campaign verification with a FAILED verification status when submitted. Identity status is unchanged.

## RCS Vets

All entity types except SOLE\_PROPRIETOR can use the following EINs to return specific RCS vet results.

### Notes


- The RCS testing EINs shown below will not trigger an email to the brand business contact. This is to prevent RCS emails from being labeled as spam by web hosts.
- CSPs must submit a ticket to [support@campaignregistry.com](mailto:support@campaignregistry.com) to enable RCS functionality on their account before they can begin testing.

EIN	Vetting Status	Description
000000000	ACTIVE	Returns a successful RCS vet with an ACTIVE vetting status. Identity status changes to VETTED_VERIFIED.
000002001	PENDING	RCS vetting status remains in PENDING. Identity status is unchanged.
000002002	FAILED	Returns an unsuccessful RCS vet with a FAILED vetting status. Identity status is unchanged. Reason: The submitted brand contact email is not an allowable domain. The submitted domain ownership cannot be independently verified.
000002003	FAILED	Returns an unsuccessful RCS vet with a FAILED vetting status. Identity status is unchanged. Reason: The issued pin expired without a response.
000002004	FAILED	Returns an unsuccessful RCS vet with a FAILED vetting status. Identity status is unchanged. Reason: An email to the submitted brand contact was undeliverable to your email server.
000002005	FAILED	Returns an unsuccessful RCS vet with a FAILED vetting status. Identity status is unchanged. Reason: An email to the submitted brand contact was hard bounced by your email server.
000002006	FAILED	Returns an unsuccessful RCS vet with a FAILED vetting status. Identity status is unchanged. Reason: The submitted brand contact email is not an allowable domain.

EIN	Vetting Status	Description
000002007	FAILED	Returns an unsuccessful RCS vet with a FAILED vetting status. Identity status is unchanged. Reason: The submitted domain ownership cannot be independently verified.
000002010	ACTIVE	Returns a successful RCS vet with an ACTIVE vetting status and reasons for a low score. Identity status changes to VETTED_VERIFIED. Vet completed with a score of 20.
000002011	FAILED	Returns an unsuccessful RCS vet with a FAILED vetting status. Reason: This is a mock vet designed to fail based on the Tax ID of the brand (EIN).

## Brand Assets

All entity types except SOLE\_PROPRIETOR can use the following EINs to return specific brand asset verification results.

 **Note:** CSPs must have RCS functionality enabled on their account to submit brand assets for verification. See the [Brand Assets Feature Overview](#) for more information.

EIN	Status	Description
000000401	VERIFIED	Any brand assets submitted for verification will result in a VERIFIED status.
000000501	FAILED	Any brand assets submitted for verification will result in an UNVERIFIED status and return feedback.

## NON\_PROFIT Entity Type

When using the NON\_PROFIT entity type, entering an EIN other than the ones listed below will always default to an `identityStatus` of VERIFIED and a 501c3 `taxExemptStatus`.

EIN	Identity Status	Description
000000001	VERIFIED	Returns <code>taxExemptStatus</code> 501c3 in the brand's <code>optionalAttributes</code> property.
000000002	VERIFIED	Returns <code>taxExemptStatus</code> 501c4 in the brand's <code>optionalAttributes</code> property.
000000003	VERIFIED	Returns <code>taxExemptStatus</code> 501c5 in the brand's <code>optionalAttributes</code> property.
000000004	VERIFIED	Returns <code>taxExemptStatus</code> 501c6 in the brand's <code>optionalAttributes</code> property.
000000005	VERIFIED	A verified brand without any <code>optionalAttributes</code> .
000000100	UNVERIFIED	Returns the brand feedback categories: TAX_ID and NONPROFIT.
000000101	UNVERIFIED	Returns the brand feedback category: NONPROFIT.

## PRIVATE\_PROFIT Entity Type

EIN	Identity Status	Description
000000000	VERIFIED	A verified brand.
000000100	UNVERIFIED	Returns the brand feedback category: TAX_ID.


## PUBLIC\_PROFIT Entity Type

Currently, the optional attribute “russell3000” can’t be mimicked through a mock EIN alone. The only way to test a Russell 3000 designation is to register a brand with a valid combination of a stock symbol and company name. A list of TCR-recognized Russell 3000 companies can be found via the CSP API’s `GET /enum/approvedPublicCompany` endpoint.

EIN	Identity Status	Description
000000000	VERIFIED	A verified brand.
000000001	VERIFIED	Returns the brand feedback category: STOCK_SYMBOL.
000000100	UNVERIFIED	Returns the brand feedback categories: TAX_ID and STOCK_SYMBOL.
000000101	UNVERIFIED	Returns the brand feedback category: TAX_ID.

### Auth+ 2.0 Supported Mock EINs

The following table lists the different mock EINs supported by TCR for Auth+ 2.0 for PUBLIC\_PROFIT entity type brands.

 **Note:** The Auth+ 2.0 testing EINs shown below will not trigger an email to the brand business contact. This is to prevent Auth+ emails from being labeled as spam by web hosts.

Once the identity status changes to VERIFIED, submitting an Auth+ vet will result in the following outcomes:

EIN	Auth+ Verification Status	Description
000000000	ACTIVE	Successful 2FA verification.
000001001	PENDING	Auth+ 2FA email sent again to business contact. The status will remain PENDING for 24 hours to allow testing of the resend 2FA functionality. After 24 hours, it will transition to FAILED.
000001002	FAILED	Failed 2FA verification.
000001003	FAILED	Failed 2FA verification. Reason: The issued PIN expired without a response.

EIN	Auth+ Verification Status	Description
000001004	FAILED	Failed 2FA verification. Reason: Auth+ 2FA email cannot be delivered.
000001005	FAILED	Failed 2FA verification. Reason: Auth+ 2FA email received a hard bounce (i.e., the email server could not find the address).
000001006	FAILED	Failed 2FA verification. Reason: Business contact email domain is not allowed.
000001007	FAILED	Failed 2FA verification. Reason: Business contact email domain cannot be matched to brand website domain.

## GOVERNMENT Entity Type

EIN	Identity Status	Description
000000000	VERIFIED	A verified brand.
000000001	VERIFIED	Returns the brand feedback category: GOVERNMENT_ENTITY.
000000100	UNVERIFIED	Returns the brand feedback categories: TAX_ID and GOVERNMENT_ENTITY.

## FAQ

**Q. Can I change a brand's existing EIN to one of the mock EINs to get the described behavior?**

**No. Mock EINs will only perform their described behaviour when entered as part of new brand registration.**